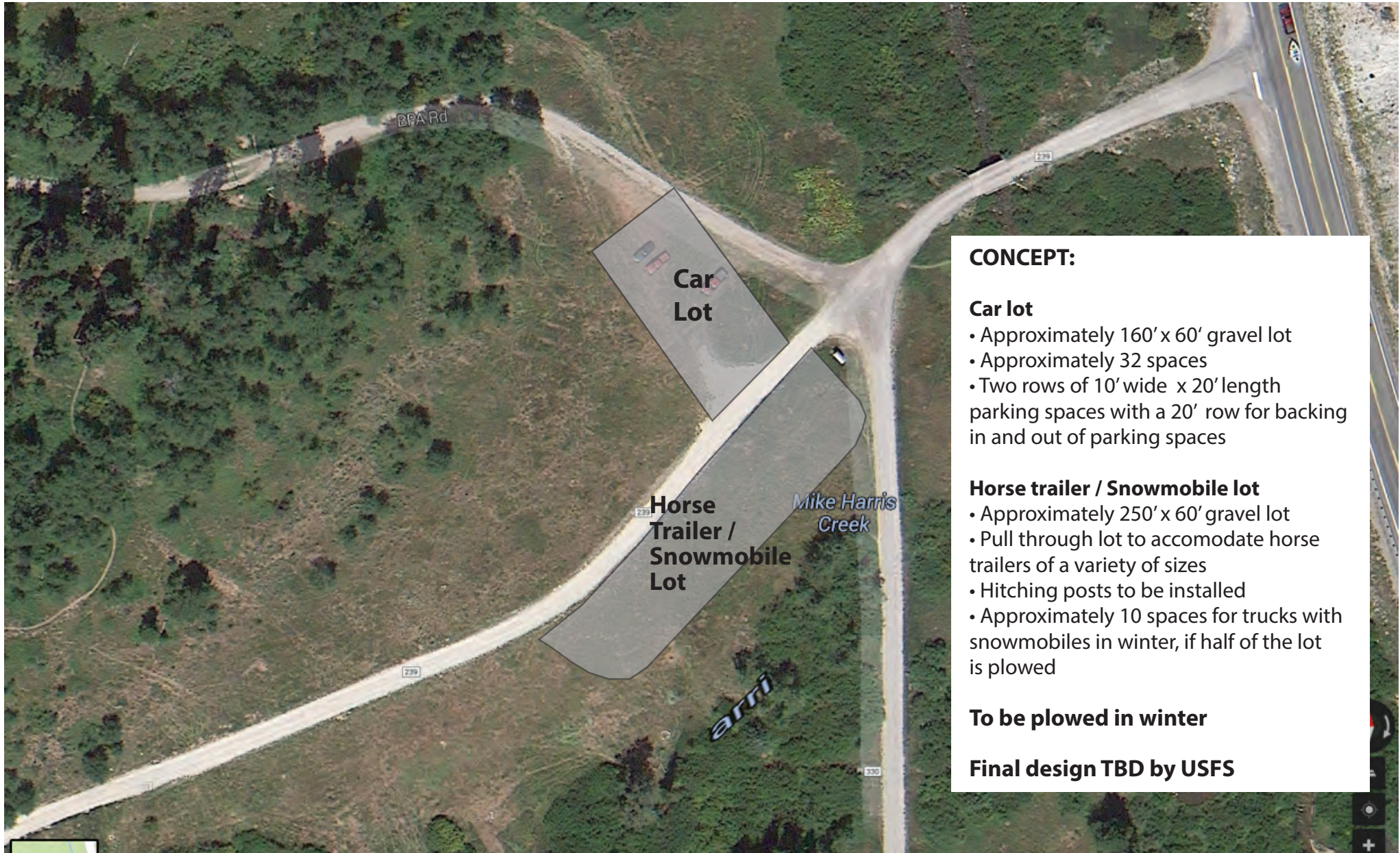


# Southern Valley Urban Interface Trails Project - Proposed Parking in Mike Harris area (conceptual)

Presentation to the public - Thursday, March 5, 2015, Victor City Hall, 7:00 p.m. and 7:45 p.m.



## CONCEPT:

### Car lot

- Approximately 160' x 60' gravel lot
- Approximately 32 spaces
- Two rows of 10' wide x 20' length parking spaces with a 20' row for backing in and out of parking spaces

### Horse trailer / Snowmobile lot

- Approximately 250' x 60' gravel lot
- Pull through lot to accommodate horse trailers of a variety of sizes
- Hitching posts to be installed
- Approximately 10 spaces for trucks with snowmobiles in winter, if half of the lot is plowed

**To be plowed in winter**

**Final design TBD by USFS**

